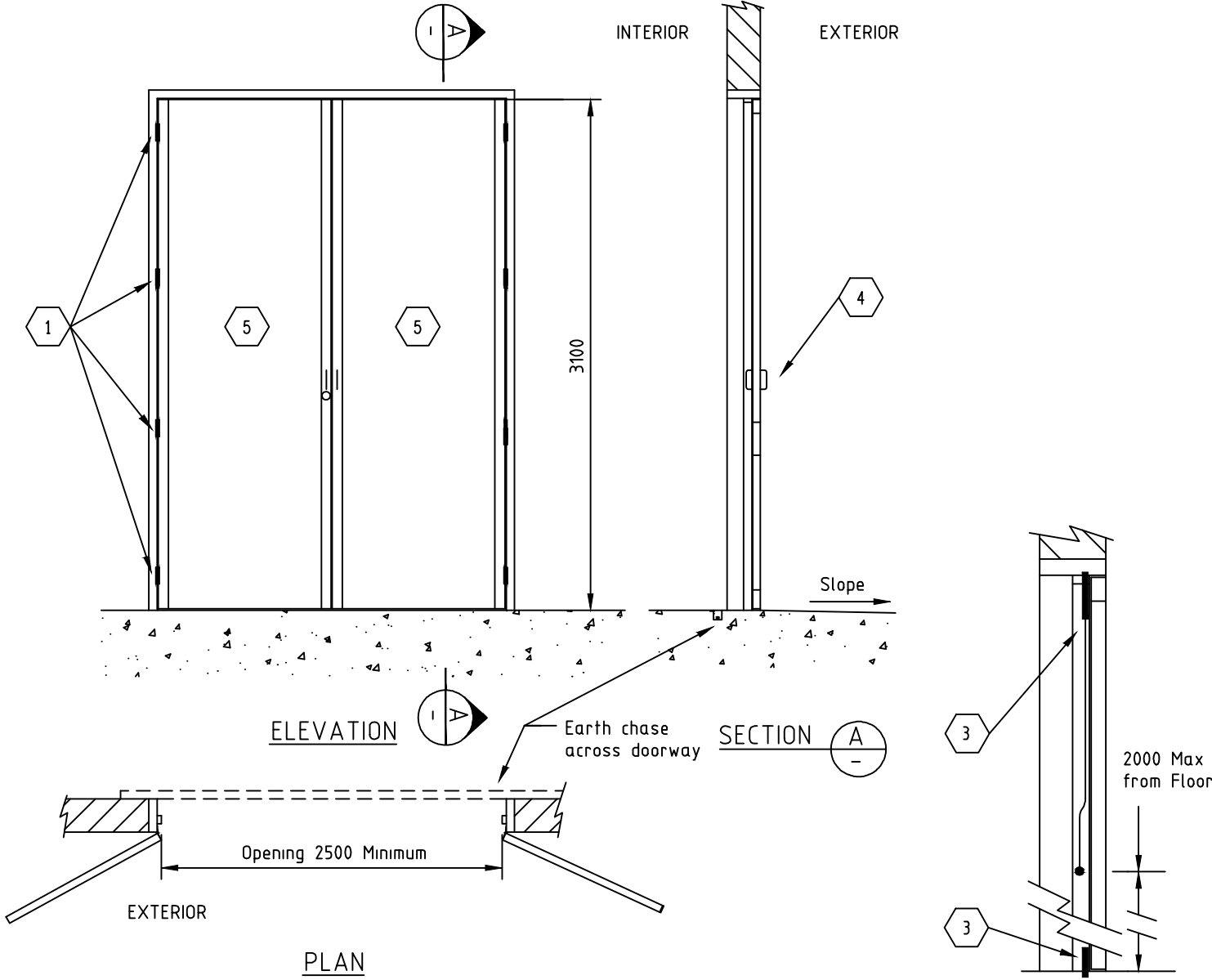
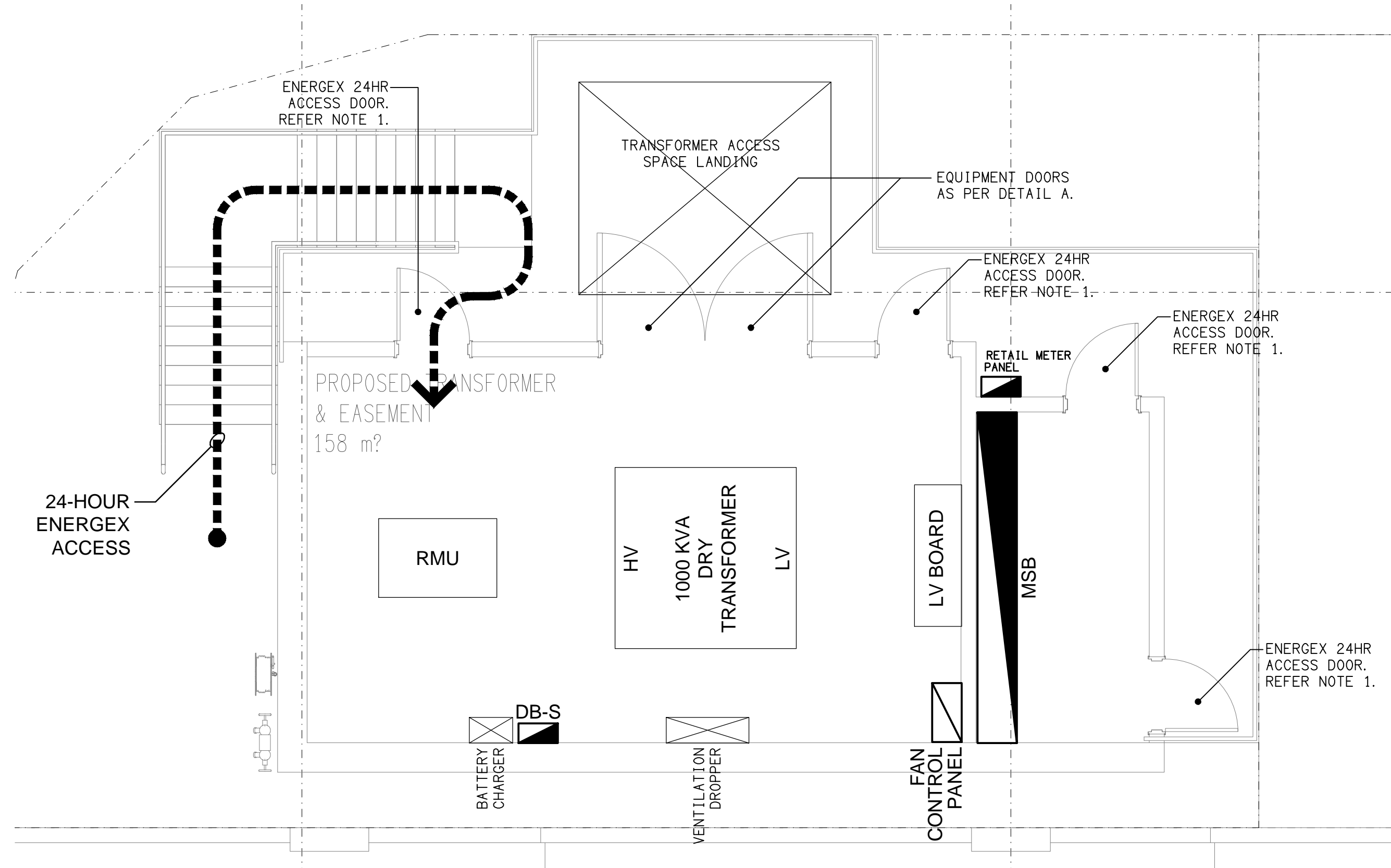


NOTES
EQUIPMENT DOOR MATERIALS

1. HEAVY DUTY HINGES. MINIMUM OF 4 HINGES REQUIRED, WELDED (NOT RIVETED) TO FRAME.
2. ONE DOOR MUST BE FITTED WITH AN EXTERNAL LOCKWOOD 570 SERIES KEYED OPERATING LOCK AND A HANDLE ON THE INSIDE. THE OTHER DOOR MUST BE FITTED WITH A SHOOTING BOLT TOP & BOTTOM. THE SHOOTING BOLT HANDLE IS TO BE A MAXIMUM OF 2000 FROM THE FLOOR.
3. ONE LEAF TO BE SECURED WITH STANDING BOLT (TOP AND BOTTOM). THE OTHER DOOR LEAF IS TO BE FITTED WITH A LOCKWOOD 570 SERIES OR SIMILAR.
4. 'D' HANDLES TO BE FITTED TO THE INTERIOR AND EXTERIOR OF BOTH DOORS.
5. 2 HR FIRE RATED DOORS.



DETAIL A
EQUIPMENT DOOR MATERIALS
NOT TO SCALE



ACCESS PLAN
TRANSFORMER ROOM
SCALE 1:50

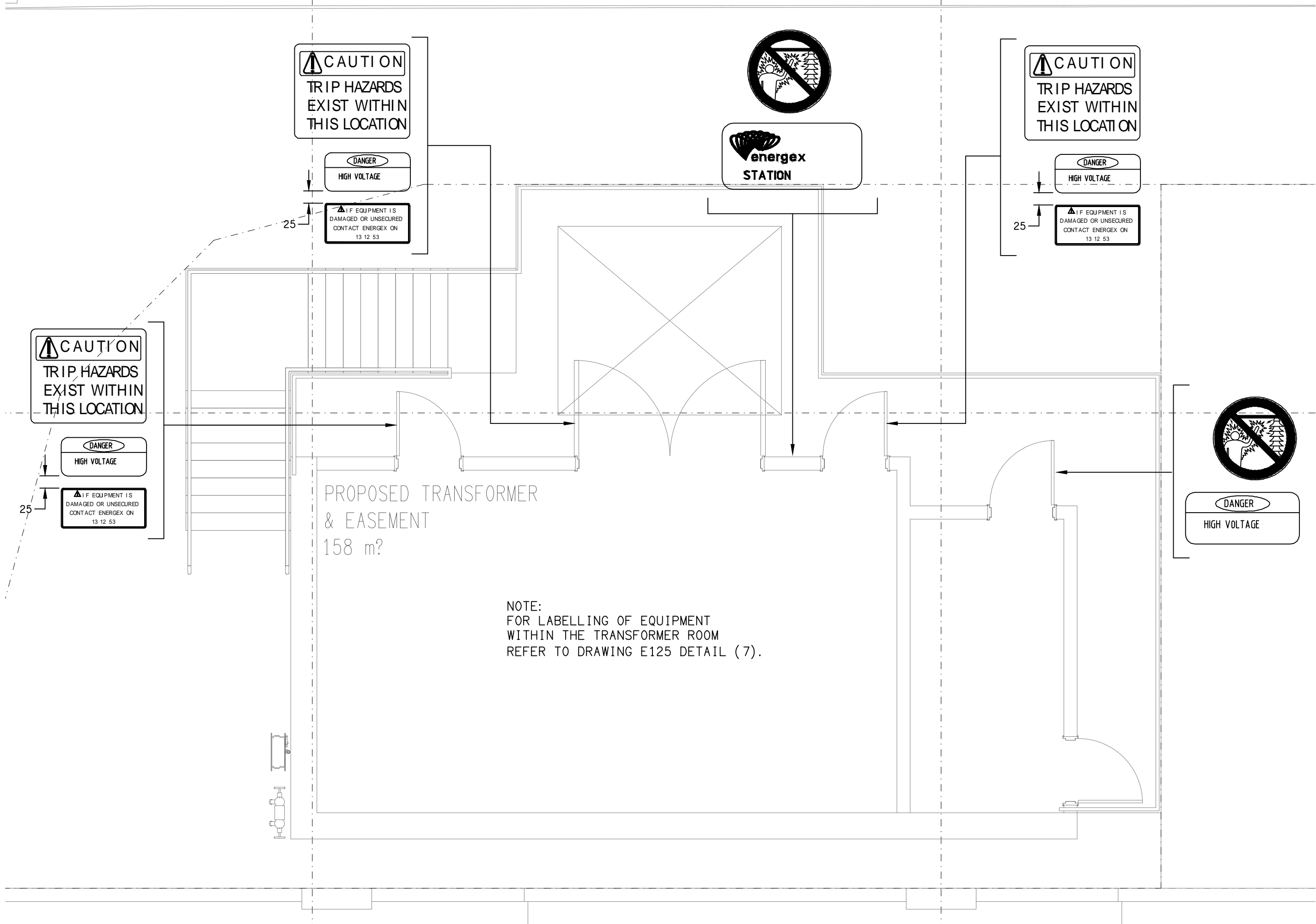
NOTES
ACCESS & FINISHES

1. PROVIDE EACH ACCESS DOOR WITH A LOCKWOOD BODY 3572 SERIES STOREROOM LOCKING LATCH WITH AN OVAL CYLINDER AVAILABLE FROM ENERGEX STORES TO SUIT 570 CYLINDERS. EACH ACCESS DOOR IS REQUIRED TO BE OPERATED BY KEY FROM THE OUTSIDE WITH THE OUTSIDE HANDLE ALWAYS BEING RIGID, AND WITH LEVEL HANDLE OR SIMILAR ON THE INSIDE. THE LATCH MUST BE FITTED SO THAT THERE IS NO LESS THAN 10mm ENGAGEMENT OF THE LATCH BOLT INTO THE STRIKER PLATE, WHEN THE DOOR IS IN THE CLOSED POSITION. THE LATCH MUST HAVE NO LESS THAN 65mm BACK SET. EACH DOOR IS ALSO TO BE FITTED WITH A PUSH PLATE AND 200mm D HANDLE ON THE OUTSIDE OF THE DOOR. DOORS TO BE A MINIMUM OF 820 x 2040. UNIMPEDED ACCESS TO ALL ENERGEX SUBSTATIONS MUST BE MAINTAINED 24 HOURS A DAY, 7 DAYS A WEEK. EACH DOOR MUST BE FITTED WITH APPROPRIATE SAFETY SIGNS, AS INDICATED BY AS3000 AND AS PER ENERGEX REQUIREMENTS. DOORS MUST SWING IN THEIR OWN FRAMES USING HEAVY DUTY NON-CORRODING METAL HINGES. 201 NIGHT LATCH OR 570 CYLINDER FOR INDOOR SUBSTATION DOORS WHERE ("OUTSIDE: OPENED BY KEY D-HANDLE ALWAYS RIGID. INSIDE: OPENED BY HANDLE AT ALL TIMES")
2. THE DEFINED FLOOD LEVEL FROM THE BRISBANE CITY COUNCIL FOR THE SITE IS RL TBA. THE SUBSTATION FLOOR LEVEL IS RL TBA.
3. STANDARD SUBSTATION SIGNS AND DANGER BOARDS WILL BE SUPPLIED AND INSTALLED BY ENERGEX.
4. PAINT ALL INTERNAL WALLS AND DOORS OF THE SUBSTATION AND THE CABLE PULLING ROOM FIRSTLY WITH A COAT OF ACRYLIC BASED FILLER/SEALER, THEN PAINTED TO BS 381C NO. 384 "LIGHT STRAW". THE CEILING IS TO BE COMPLETED WITH GLOSS / SEMI GLOSS CEILING WHITE. ALL EXPOSED NON-GALVANISED METAL MUST BE PRIMED WITH AN APPROPRIATE ETCH PRIMER AND FINISHED IN TWO (2) COATS OF GREY PAINT, EITHER ENAMEL OR ACRYLIC BASED. EXTERNAL DOORS CAN BE FINISHED IN COLOURS TO SUIT THE BUILDING DECOR. LOUVERS CAN BE FINISHED IN COLOURS TO SUIT THE BUILDING DECOR, HOWEVER IF THEY ARE TO BE LEFT IN NATURAL ALUMINIUM THEY MUST BE FINISHED WITH A GRADE A COATING OF CLEAR ANODISING, FOLLOWED BY A COAT OF CLEAR METHACRYLATE LACQUER OR EQUIVALENT. THE CONCRETE FORMWORK FINISH MUST BE CLASS 2 OR BETTER.
5. CRASH BARS ARE TO BE PROVIDED ON ALL PERSONAL ACCESS AND ESCAPE DOORS.

NOTES

- (1) Use this signage for indoor stations only.
- (2) Unless otherwise noted signs to be mounted 1500mm (To centre) above ground or floor level.
- (3) Station Numbers using "3M" 220 black SCOTCHCAL CAST VINYL to be ordered separately.
- (3) Caution Signs to be Mounted Under High Voltage Signs on Outside Doors and Centrally On Inside Doors.
- (4) Caution Labels to be mounted under the High Voltage Sign on both Outside and Inside of Doors

SIGN	Stock Code	QTY	SIGN	Stock Code	QTY
	12198	3		13652	2
	22094	3		12207	1
	12201	1	METAL FIXING SCREWS	15201	40
LETTER "S"	11649	1	MASONRY ANCHORS	4912	24
LETTER "G"	11637	1			
NUMBERS "1-0"	11621			20177	3
	11630				



SIGNAGE PLAN
TRANSFORMER ROOM
SCALE 1:50